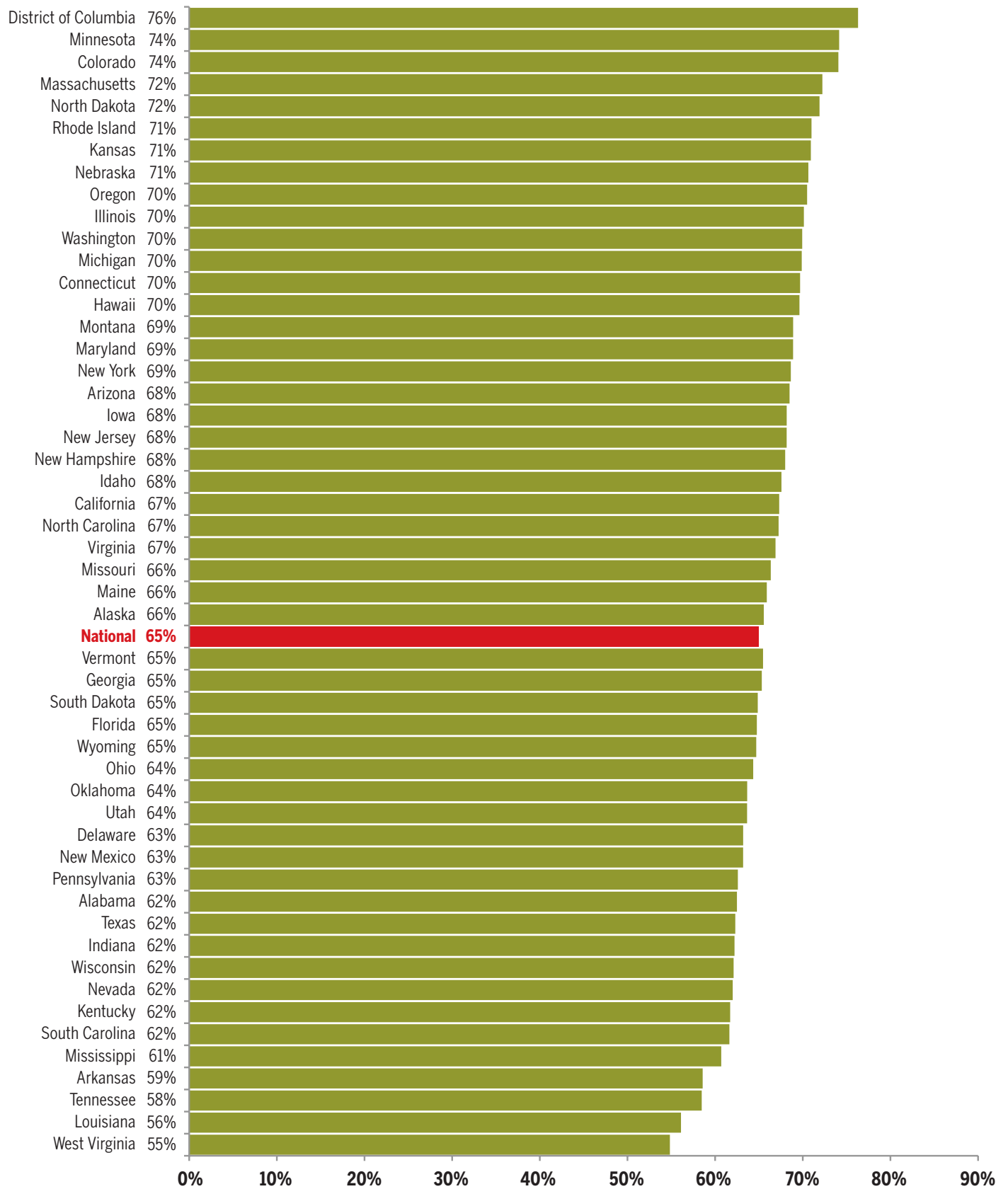
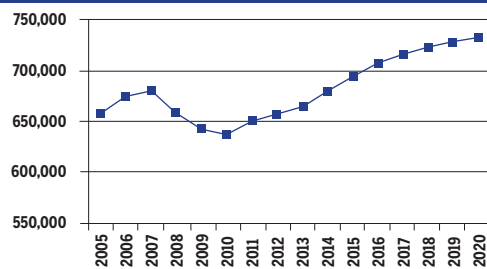


**Figure 1: By 2020, 65 percent of jobs in the nation will require postsecondary education.**



**HAWAII**  
2010-2020 Total Job Openings 244,000

**HI TOTAL JOBS, excluding military**



| OCCUPATION                            | 2010 jobs      | 2020 jobs      | Growth rate (%) |
|---------------------------------------|----------------|----------------|-----------------|
| Managerial and Professional Office    | 85,500         | 99,930         | 17              |
| STEM                                  | 20,310         | 22,750         | 12              |
| Social Sciences                       | 3,430          | 3,990          | 17              |
| Community Services and Arts           | 33,850         | 39,720         | 17              |
| Education                             | 41,350         | 51,330         | 24              |
| Healthcare Professional and Technical | 23,870         | 27,900         | 17              |
| Healthcare Support                    | 13,230         | 16,440         | 24              |
| Food and Personal Services            | 139,940        | 165,050        | 18              |
| Sales and Office Support              | 169,570        | 186,550        | 10              |
| Blue Collar                           | 107,040        | 119,620        | 12              |
| <b>TOTAL</b>                          | <b>638,080</b> | <b>733,270</b> | <b>15</b>       |

| INDUSTRY   | 2010 jobs      | 2020 jobs      | Growth rate (%) |
|--|----------------|----------------|-----------------|
| Agriculture, Forestry, Fishing and Hunting                               | 13,010         | 14,000         | 8               |
| Mining, Quarrying, and Oil and Gas Extraction                            | 870            | 1,310          | 51              |
| Utilities  | 2,830          | 3,210          | 13              |
| Construction   | 33,090         | 37,710         | 14              |
| Manufacturing  | 13,970         | 15,980         | 14              |
| Wholesale Trade  | 17,730         | 18,920         | 7               |
| Retail Trade   | 67,900         | 73,120         | 8               |
| Transportation and Warehousing   | 24,180         | 27,120         | 12              |
| Information  | 9,740          | 10,740         | 10              |
| Finance and Insurance  | 25,280         | 30,930         | 22              |
| Real Estate and Rental and Leasing                                       | 30,633         | 36,000         | 18              |
| Professional, Scientific, and Technical Services                         | 36,310         | 40,070         | 10              |
| Management of Companies and Enterprises                                  | 5,790          | 6,870          | 19              |
| Administrative and Support and Waste Management and Remediation Services | 45,430         | 57,350         | 26              |
| Educational Services   | 19,590         | 27,380         | 40              |
| Healthcare and Social Assistance   | 59,740         | 73,550         | 23              |
| Arts, Entertainment, and Recreation                                      | 17,050         | 19,060         | 12              |
| Accommodation and Food Services  | 77,410         | 86,400         | 12              |
| Other Services (except Public Administration)                            | 36,470         | 43,270         | 19              |
| Government   | 101,070        | 110,280        | 9               |
| <b>TOTAL</b>   | <b>638,080</b> | <b>733,270</b> | <b>15</b>       |

**JOB OPENINGS BY OCCUPATION AND EDUCATION LEVEL (IN THOUSANDS)**

| OCCUPATION                            | Less than high school | High school diploma | Some college/ no degree | Associate's degree | Bachelor's degree | Master's degree or better |
|---------------------------------------|-----------------------|---------------------|-------------------------|--------------------|-------------------|---------------------------|
| Managerial and Professional Office    | 0                     | 4                   | 7                       | 4                  | 13                | 4                         |
| STEM                                  | 0                     | 1                   | 1                       | 1                  | 3                 | 2                         |
| Social Sciences                       | 0                     | 0                   | 0                       | 0                  | 0                 | 1                         |
| Community Services and Arts           | 0                     | 1                   | 3                       | 1                  | 6                 | 3                         |
| Education                             | 0                     | 2                   | 1                       | 1                  | 7                 | 7                         |
| Healthcare Professional and Technical | 0                     | 0                   | 1                       | 2                  | 3                 | 3                         |
| Healthcare Support                    | 0                     | 1                   | 2                       | 1                  | 1                 | 0                         |
| Food and Personal Services            | 5                     | 22                  | 14                      | 5                  | 8                 | 2                         |
| Sales and Office Support              | 2                     | 18                  | 19                      | 7                  | 15                | 2                         |
| Blue Collar                           | 3                     | 18                  | 10                      | 5                  | 3                 | 1                         |
| <b>TOTAL</b>                          | <b>10</b>             | <b>66</b>           | <b>59</b>               | <b>26</b>          | <b>58</b>         | <b>24</b>                 |

**RECOVERY:**



| OCCUPATION                                     | Less than high school | High school diploma | Some college/ no degree | Associate's degree | Bachelor's degree | Master's degree or better |
|--|-----------------------|---------------------|-------------------------|--------------------|-------------------|---------------------------|
| <b>Managerial and Professional Office:</b>     |                       |                     |                         |                    |                   |                           |
| Management                                     | 710                   | 9,060               | 11,350                  | 7,660              | 21,790            | 6,170                     |
| Business operations                            | 60                    | 1,920               | 5,460                   | 3,060              | 6,580             | 2,510                     |
| Financial services                             | 180                   | 880                 | 1,890                   | 2,310              | 11,040            | 2,210                     |
| Legal  | -                     | 30                  | 1,450                   | 200                | 870               | 2,530                     |
| <b>STEM :</b>                                  |                       |                     |                         |                    |                   |                           |
| Computers & mathematical sciences              | -                     | 1,030               | 1,800                   | 1,230              | 4,050             | 1,450                     |
| Architecture                                   | -                     | 180                 | 680                     | 240                | 750               | 390                       |
| Engineering                                    | -                     | 930                 | 690                     | 480                | 3,270             | 980                       |
| Life & physical sciences                       | -                     | 120                 | 630                     | -                  | 1,980             | 1,900                     |
| <b>Social Sciences</b>                         | -                     | -                   | -                       | -                  | 140               | 3,800                     |
| <b>Community Services and Arts:</b>            |                       |                     |                         |                    |                   |                           |
| Community & social services                    | 220                   | 800                 | 1,500                   | -                  | 3,740             | 6,360                     |
| Arts, design, entertainment, sports & media    | -                     | 880                 | 7,900                   | 3,370              | 13,350            | 1,600                     |
| <b>Education, Training &amp; Library</b>       | 340                   | 5,110               | 2,630                   | 1,780              | 19,970            | 21,500                    |
| <b>Healthcare Professional &amp; Technical</b> | 120                   | 800                 | 4,110                   | 5,670              | 8,300             | 9,010                     |
| <b>Healthcare Support</b>                      | 550                   | 3,500               | 5,610                   | 3,560              | 3,100             | -                         |
| <b>Food and Personal Services:</b>             |                       |                     |                         |                    |                   |                           |
| Food preparation & serving related             | 7,110                 | 25,100              | 16,760                  | 4,910              | 10,100            | 610                       |
| Building and grounds cleaning & maintenance    | 5,530                 | 22,450              | 10,470                  | 1,300              | 3,430             | -                         |
| Personal care & services                       | 1,750                 | 10,650              | 9,670                   | 4,100              | 7,110             | 3,040                     |
| Protective services                            | 600                   | 7,000               | 5,810                   | 3,180              | 3,350             | 1,030                     |
| <b>Sales and Office Support:</b>               |                       |                     |                         |                    |                   |                           |
| Sales & related                                | 3,170                 | 28,940              | 28,090                  | 8,840              | 22,050            | 2,920                     |
| Office & administrative support                | 2,440                 | 24,060              | 29,840                  | 11,320             | 22,320            | 2,570                     |
| <b>Blue Collar:</b>                            |                       |                     |                         |                    |                   |                           |
| Farming, fishing & forestry                    | 730                   | 3,250               | 880                     | 290                | 270               | 160                       |
| Construction & extraction                      | 3,100                 | 17,830              | 7,930                   | 4,930              | 1,770             | -                         |
| Installation, maintenance & repair             | 380                   | 10,230              | 5,790                   | 4,250              | 1,430             | 240                       |
| Production                                     | 1,670                 | 5,490               | 6,280                   | 3,590              | 1,990             | 260                       |
| Transportation & material moving               | 2,790                 | 18,410              | 8,950                   | 2,710              | 3,130             | 870                       |

